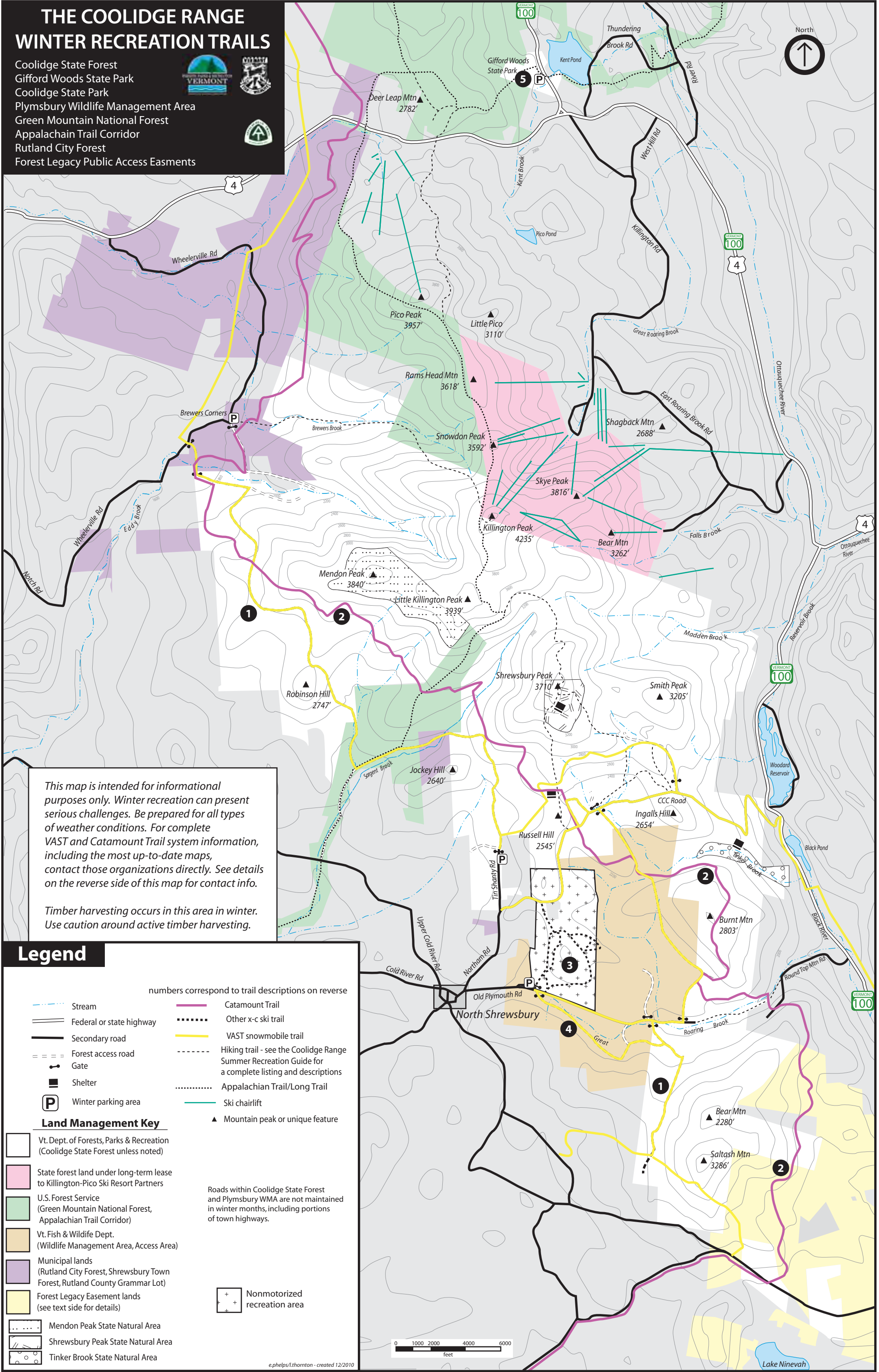
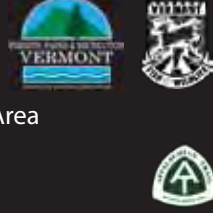


THE COOLIDGE RANGE WINTER RECREATION TRAILS

Coolidge State Forest
Gifford Woods State Park
Coolidge State Park
Plymbury Wildlife Management Area
Green Mountain National Forest
Appalachian Trail Corridor
Rutland City Forest
Forest Legacy Public Access Easments

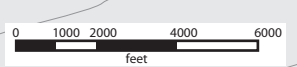


This map is intended for informational purposes only. Winter recreation can present serious challenges. Be prepared for all types of weather conditions. For complete VAST and Catamount Trail system information, including the most up-to-date maps, contact those organizations directly. See details on the reverse side of this map for contact info.

Timber harvesting occurs in this area in winter. Use caution around active timber harvesting.

Legend

- | | |
|--------------------------|---|
| Stream | Catamount Trail |
| Federal or state highway | Other x-c ski trail |
| Secondary road | VAST snowmobile trail |
| Forest access road | Hiking trail - see the Coolidge Range Summer Recreation Guide for a complete listing and descriptions |
| Gate | Appalachian Trail/Long Trail |
| Shelter | Ski chairlift |
| Winter parking area | Mountain peak or unique feature |
- numbers correspond to trail descriptions on reverse
- | | |
|---|------------------------------|
| Vt. Dept. of Forests, Parks & Recreation (Coolidge State Forest unless noted) | Nonmotorized recreation area |
| State forest land under long-term lease to Killington-Pico Ski Resort Partners | |
| U.S. Forest Service (Green Mountain National Forest, Appalachian Trail Corridor) | |
| Vt. Fish & Wildlife Dept. (Wildlife Management Area, Access Area) | |
| Municipal lands (Rutland City Forest, Shrewsbury Town Forest, Rutland County Grammar Lot) | |
| Forest Legacy Easement lands (see text side for details) | |
| Mendon Peak State Natural Area | |
| Shrewsbury Peak State Natural Area | |
| Tinker Brook State Natural Area | |
- Roads within Coolidge State Forest and Plymbury WMA are not maintained in winter months, including portions of town highways.



THE COOLIDGE RANGE WINTER RECREATION GUIDE

Coolidge State Forest
Gifford Woods State Park
Plymbsbury Wildlife Management Area
Tiny Pond Wildlife Management Area



Lee Krohn for VT FPR



Welcome to the Coolidge Range Area

Coolidge State Forest and Plymbsbury Wildlife Management Area provide access to more than 18,600 acres of state lands. The area is most noted for mountainous terrain, expansive forests and associated wetlands. Elevations range between 1,900 and 4,235 feet, and include a “high peaks” area containing Killington Peak (Vermont’s 2nd highest peak, 4,235’), Little Killington (3,939’), Shrewsbury (3,720’), Mendon (3,840’) and Smith (3,220’) peaks. This area, along with Gifford Woods State Park and Coolidge State Park, is referred to as the ‘Coolidge Range.’

The Coolidge Range forms a “bridge” along the Green Mountain spine that connects blocks of Green Mountain National Forest land to the north and to the south. This large block of remote public land provides nearly endless opportunities for low intensity, dispersed recreational activities including hiking, hunting, fishing, birding, primitive camping and cross-country skiing. Focused parcels provide more intensive recreational opportunities such as down-hill skiing (Killington Resort) or snowmobiling. Several nearby state parks offer developed camping and day use facilities.

Natural Areas

There are four designated Natural Areas (NA) in the Coolidge Range. Tinker Brook NA is characterized by a

steep, rocky gorge that supports old growth yellow birch and red spruce. Shrewsbury Peak NA and Mendon Peak NA consist of high elevation spruce-fir forests. Gifford Woods NA encompasses an old-growth northern hardwood forest. Please note that motorized recreation, including snowmobiling, is PROHIBITED in Natural Areas.

Killington Resort on State Land

Killington/Pico Ski Resort Partners, LLC leases nearly 1,700 acres of Coolidge State Forest at Killington Resort and offers downhill skiing, snowboarding, mountain biking and hiking activities. The company charges fees for use of their lifts and facilities, and may control, limit or exclude public use or access in certain situations. Pico Mountain operates on private land owned by the same resort.

Summer Recreation

Hiking, walking, wildlife viewing, camping and fishing are popular summer activities. There are miles of hiking trails and old woods roads offering access into the Coolidge Range Area. The Coolidge Range Summer Recreation Trails Guide has more detailed information on summertime activities.

Forest Legacy Easements

Public access easements are held by the State on private land for public recreation. Several properties adjacent to Coolidge Range lands have these easements. The public access easements are funded through the Vermont Forest Legacy Program.

Trail Partners

Trails in the Coolidge Range are managed and maintained by Forests, Parks & Recreation with many partners, including the Green Mountain Club, Farm & Wilderness Foundation, Killington-Pico Ski Resort Partners, Vermont Association of Snow Travelers, Catamount Trail Association, Shrewsbury Outing Club and Appalachian Trail Conservancy.

For More Information

Please contact the Agency of Natural Resources Rutland North office located at 271 N Main St, Suite 215, Rutland, VT 05701, or contact by phone at (802)786-0060. On the web at: www.fpr.org, www.vtfishandwildlife.com and www.vtstateparks.com.



To request this publication in Braille or alternate visual format, please contact parks@vermont.gov

VT TDD Relay Dial 7-1-1

Printed on recycled paper

12/2010 LT/ERP

Winter Recreation

Long winters and deep snows create great winter conditions in the Coolidge Range area. There are 33 miles of groomed snowmobile trails. Cross-country skiers and snowshoers can ski along the Catamount Trail, bushwhack to any area of the property, enjoy the trails on a 600-acre block of non-motorized forest area or share the miles of groomed snowmobile trails.

Winter can be serious and challenging in the Coolidge Range area. Please use caution and be prepared with appropriate winter gear and clothing. No roads (including the CCC Road and TH #20) are plowed in the winter within the state land boundary.

Parking and Access

Several improved parking areas are maintained for winter recreation activities. Parking is available on TH#20 in North Shrewsbury, Gifford Woods State Park and at the kiosk on Tiny Pond Wildlife Management Area on Route 100 in Ludlow. The CCC Road, most of TH #20 and the park entrance roads are not maintained for automobiles in winter. Do not block gates or roadways.

There are many miles of unplowed roads within the Coolidge Range area. Some are groomed snowmobile trails; many others are untouched and available for backcountry exploration on skis or snowshoes. Most roads are dead ends and are gated.

Roads and trails are available for snowshoeing and cross-country skiing at Coolidge and Gifford Woods State Parks. In addition, a VAST snowmobile trail runs through Coolidge State Park, and a parking area is maintained on Ranger’s Road off of Vermont Route 100A in Plymouth Notch.

Trail Networks

1. VAST Snowmobile Trails (16 miles)

Groomed snowmobile trails traverse Coolidge State Forest north to south and are part of the larger statewide Route 7 corridor system. East-west trails along the CCC Road and TH #20 provide access to the Route 7 Corridor trail. The trails are also open to cross-country skiing and snowshoeing. Care should be taken when these uses coincide. The trail is open from December 15 through April 15 depending upon snow conditions. Speed limit is 35 mph. For more detailed information on snowmobile trails and conditions, contact the Vermont Association of Snow Travelers at vtvast.org or (802)229-0005.

2. Catamount Trail (8 miles)

A portion of the Catamount Trail, a state-wide cross-country ski trail system, bisects state property from Ninevah Four Corners in the south to Brewers Corners off the Wheelerville Road in the north. Sections of the trail coincide with the VAST trail system. The terrain is challenging in places and there are great views along the way. For more detailed information on the Catamount Trail system refer to the *Catamount Trail Guidebook* or visit www.catamounttrail.org.

3. Bessenyey Loop Trail (2 miles)

This loop trail is located within an area designated for non-motorized recreation within Coolidge State Forest. The trail is ungraded and available for cross-country skiing and snowshoeing. It begins east of the parking area in North Shrewsbury and offers a quiet winter experience on moderate terrain through northern hardwood and lowland spruce-fir forests.

4. Winter Recreation Trail (2 miles)

This trail begins at the North Shrewsbury parking area and travels east-west paralleling TH #20. It offers an alternative to the town road during winters when the road is plowed for logging access. This trail is groomed for snowmobile use and is available for cross-country skiing and snowshoeing as well. The trail is on moderate terrain through Norway spruce plantations, lowland spruce-fir and northern hardwood forests.

5. Gifford Woods State Park Roads and Trails (3 miles)

The park roadways and hiking trails provide an easily-accessible place to try out snowshoeing or cross country skiing. The gentle terrain and wide lanes of the roadways are popular places in wintertime. In addition, the single track Kent Brook Trail and the Appalachian Trail offer more challenging routes.

Camping

Primitive camping is permitted within the following guidelines: no permits are required for stays of less than 4 days or for groups of less than 11 people; camping must be at least 100 feet from any stream or body of water, 200 feet from a trail or property line; and at least 1,000 feet from any traveled road. No camping is allowed within designated Natural Areas. Please practice “leave no trace” or “carry in carry out” camping techniques. There are 3 lean-to shelters available for overnight use (Russell Hill, Shrewsbury Peak and Tinker Brook).

Off-season camping is available by pre-approval from mid November to mid April at Coolidge and Gifford Woods State Parks. Please visit <https://www.vtstateparks.com/html/camping.html#offSeasonCamping> for more information.

Hunting, Fishing and Trapping

The Coolidge Range offers more than 18,600 acres of public land for hunting, fishing and trapping. This large acreage is well suited to hunting large game including white-tailed deer, black bear and moose. Ruffed grouse, snowshoe hare and turkey hunting is also popular. Several brooks offer fishing opportunities, primarily for brook trout. These activities require a license from the Vermont Fish and Wildlife Department.

Off-Road Vehicles Prohibited

The use of ATV’s, dirt bikes, or any other motorized off-road vehicle is prohibited on these public lands, and the road and trail systems on them. Snowmobiles are allowed only on designated VAST trails.