

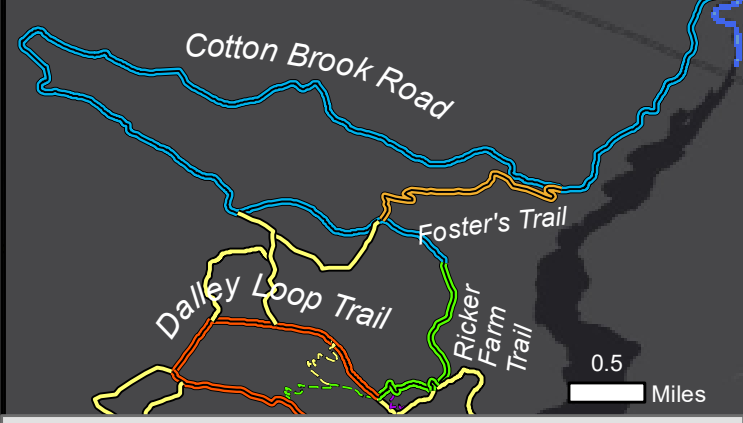
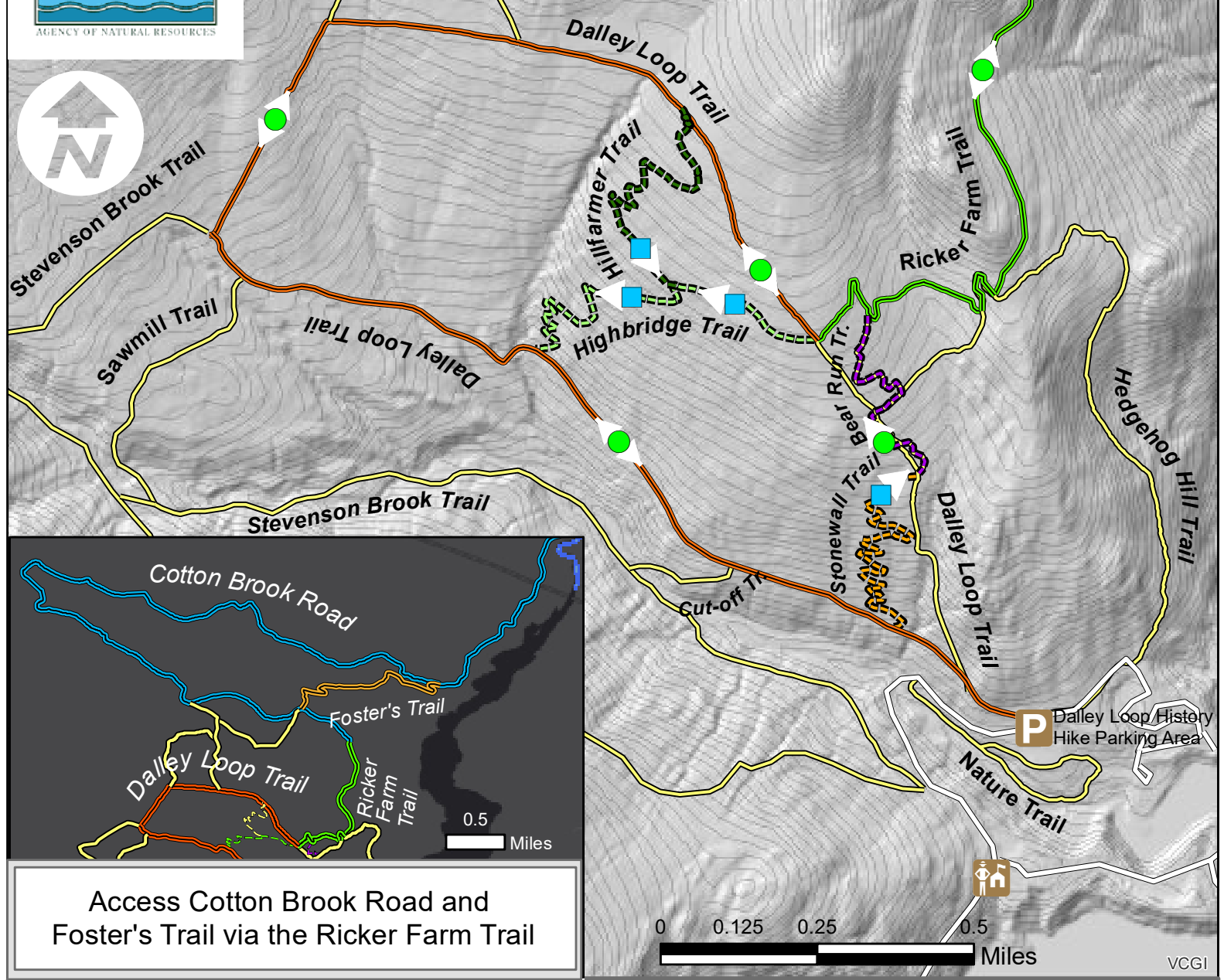


# WATA

waterbury area trail alliance

# LITTLE RIVER STATE PARK MOUNTAIN BIKE TRAIL NETWORK

3444 Little River Rd. Waterbury, VT 05676 Park Phone: (802)244-7103



Access Cotton Brook Road and Foster's Trail via the Ricker Farm Trail

### LEGEND

- Single Track
- Double Track (Multi-use)
- Hiking Trails ONLY
- Park Roads
- Main Parking Area for Mountain Bike Trail Network
- Direction of Travel
- Beginner Trail
- Intermediate Trail

### DOUBLE TRACK YIELD CHART

**TRAIL COURTESY**

**PEDESTRIANS YIELD TO BIKES ON DOWNHILL SINGLE TRACK**

**ONLY RIDE DESIGNATED MOUNTAIN BIKE TRAILS. TRAILS ON CAUTION REQUIRE YOU TO GET OFF YOUR BIKE AND WALK ALL WET AREAS. DOUBLE TRACK MOUNTAIN BIKE TRAILS ARE MULTIPLE-USE: YIELD TO PEDESTRIANS AND HORSES. PEDESTRIANS YIELD TO MOUNTAIN BIKES ON DOWNHILL SINGLE TRACK. TRAILS OPEN 10AM TO SUNSET APRIL 15-NOVEMBER 2 PLEASE REPORT ANY TRAIL ISSUES TO PARK STAFF. TO REPORT AN EMERGENCY CALL 911.**

## Ride Safe and Have Fun!

Trail Conditions and Open/Closed Status are posted on Trailforks. Be sure to check the link below before heading out to the park:  
[www.trailforks.com/region/little-river-state-park-16188/](http://www.trailforks.com/region/little-river-state-park-16188/)

Trails are maintained through a collaborative partnership between the Department of Forests, Parks, and Recreation and the Waterbury Area Trails Alliance (WATA). To support these efforts consider becoming a WATA member ([www.waterburytrails.com](http://www.waterburytrails.com)) and/or volunteering.